

AERIAL AND GROUND PHOTOGRAPHS

OF

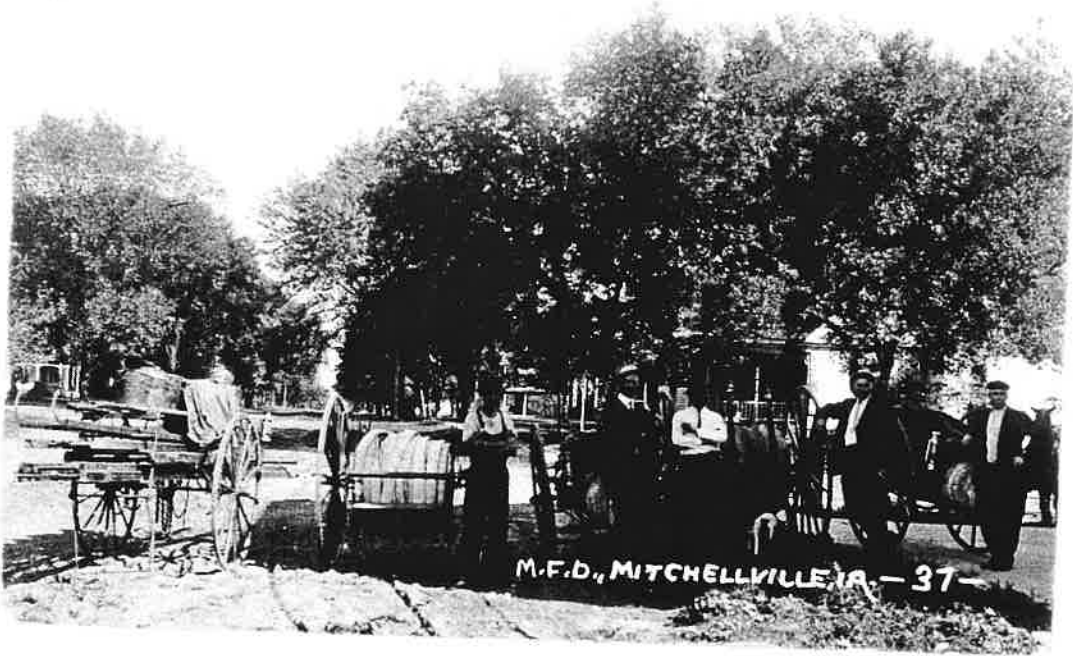
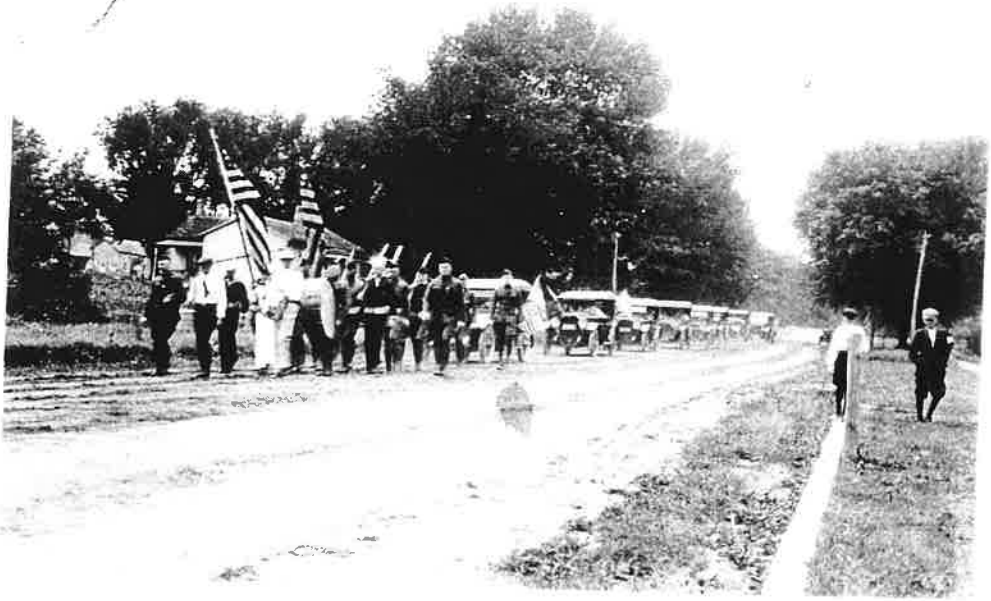
MITCHELLVILLE, IOWA

IN HONOR OF THE 150TH ANNIVERSARY

OF THE

FOUNDING

JULY 2006



- I Street scenes taken by Charles Craig, Sr. from the top of the water tower. Family tradition says that because he was not afraid of heights, the City assigned him the task of changing the light bulb on top of the water tower, from which he took pictures. However, he probably used his camera while standing on the narrow platform below the very top.

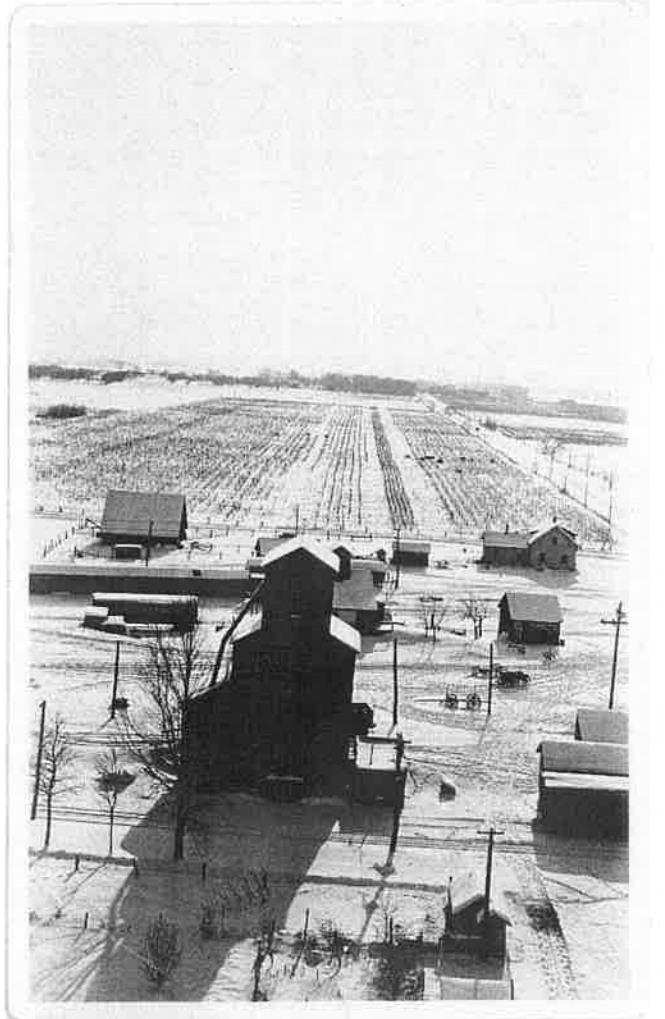
- II Some scenes of the streets and trains were taken by Harold Toland of Dickens, IA, who was his wife's nephew, and as well by unidentified photographers.

- III This 1952 aerial view is from a scrapbook, and it was probably taken by a Des Moines Register and Tribune photographer.

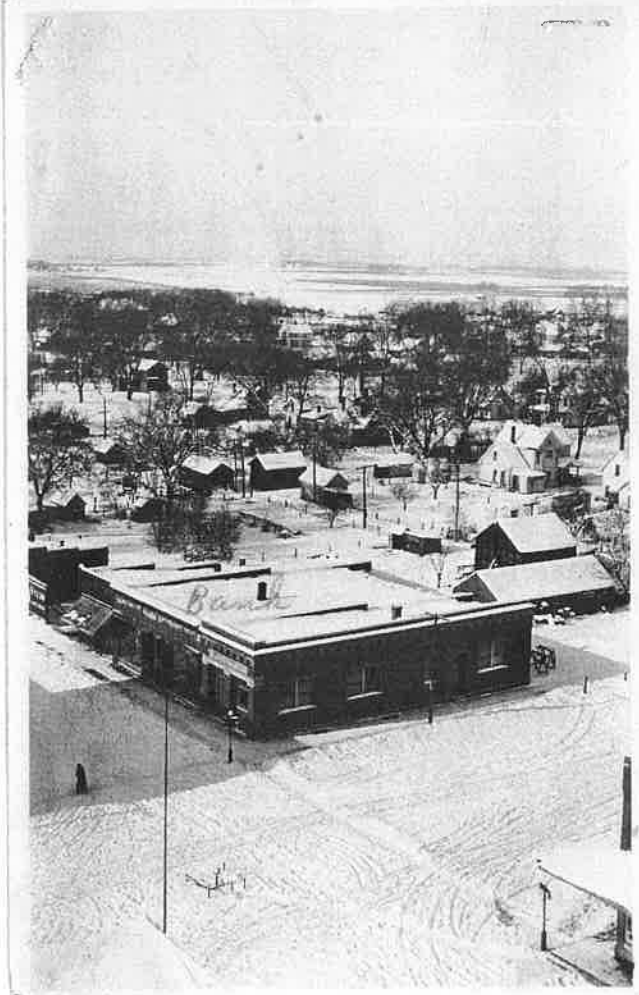
Lois Craig



Looking west to Post Office
building & other stores
Methodist Church beyond



Looking south beyond the elevator





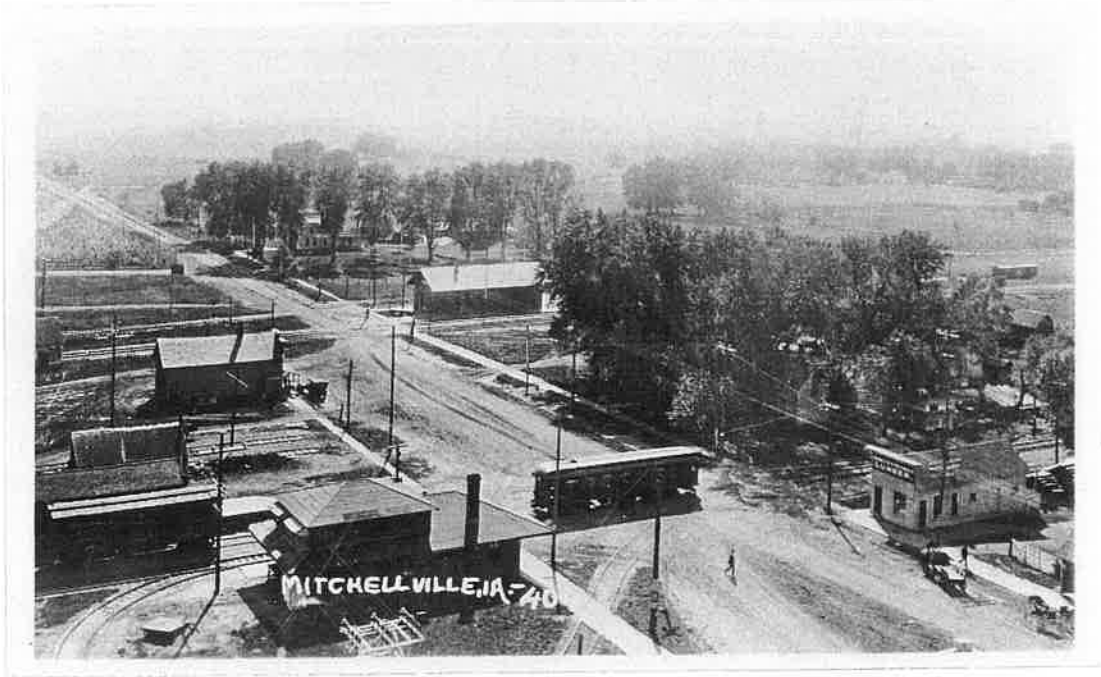
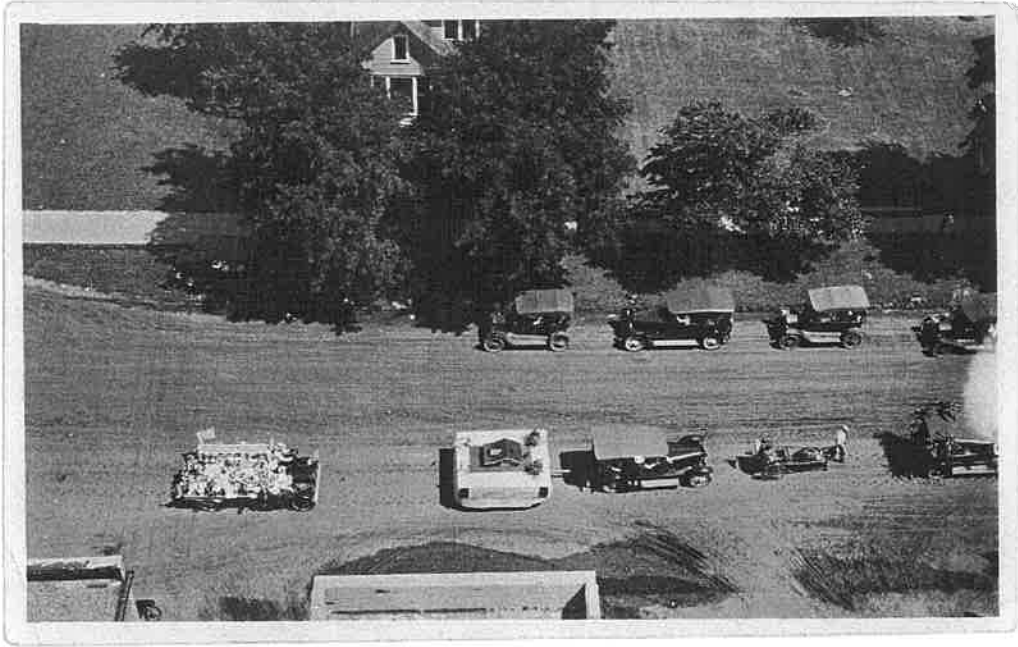
Looking east



Looking Northeast.
Congregational Church in foreground



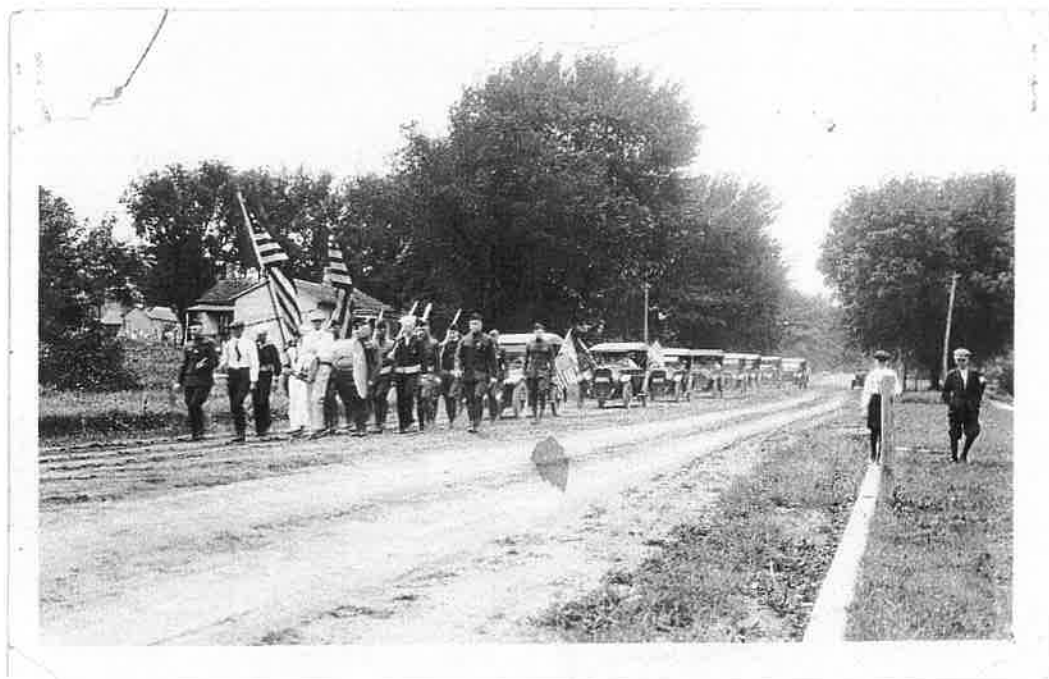
Looking East



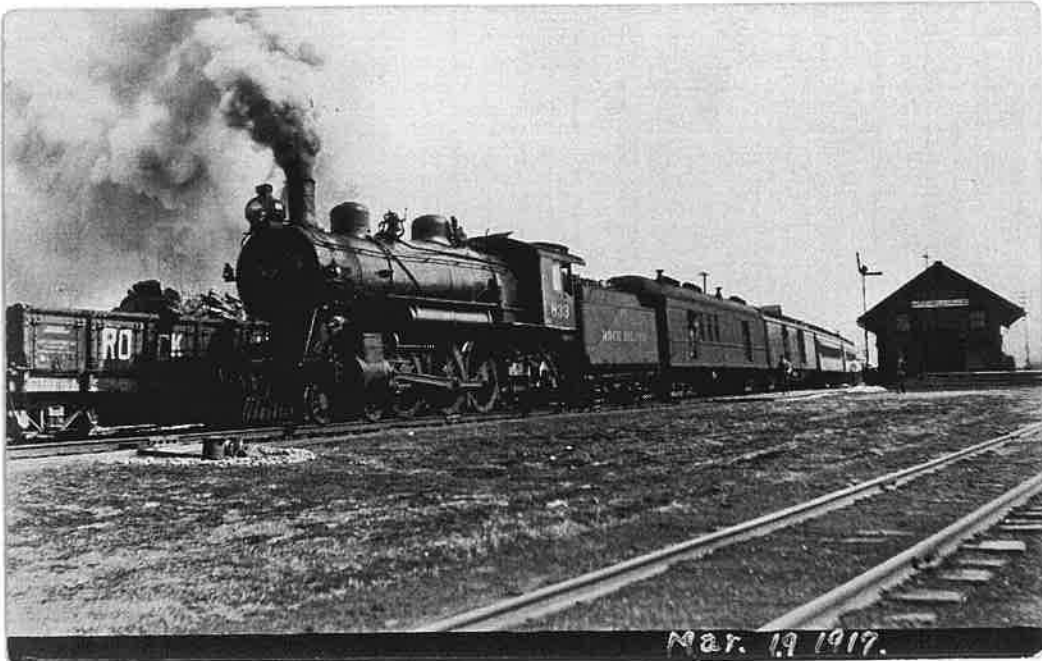
Interurban and depot. Rock Island depot beyond

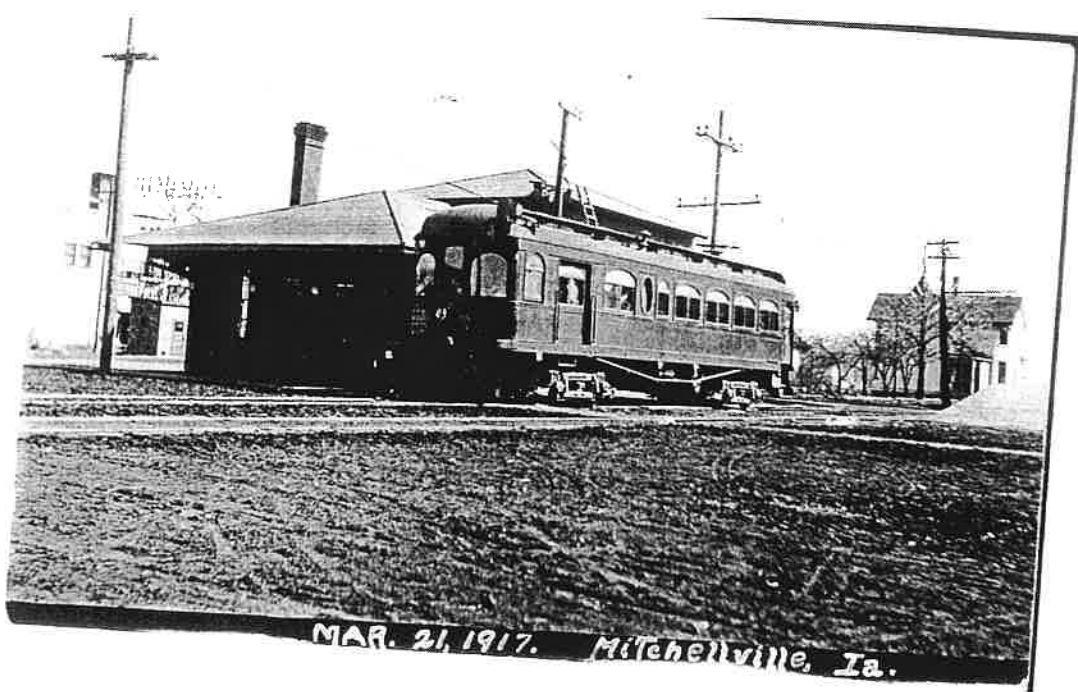


Notice town well in Center Square



Volunteers, WWI





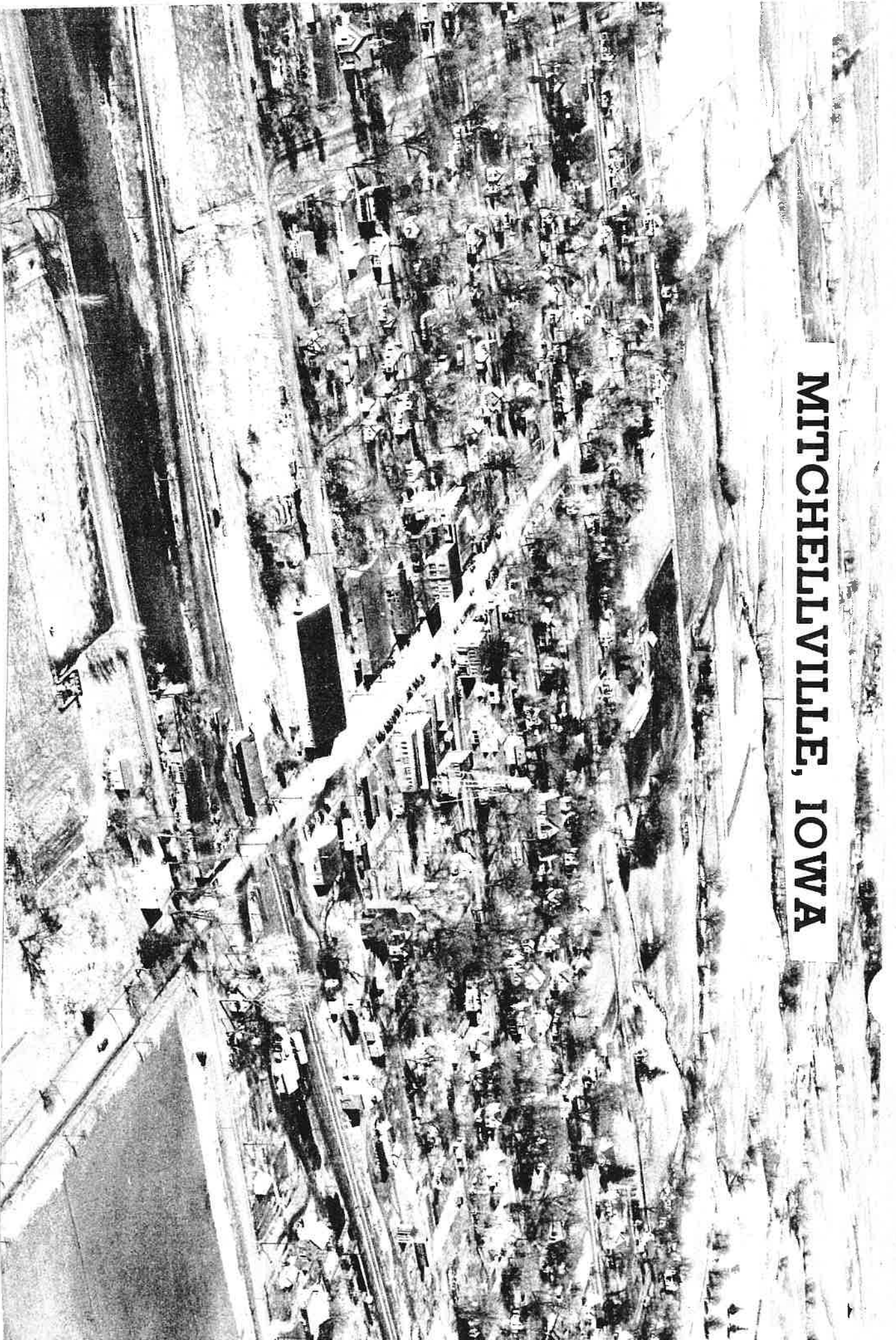
Looking North on Center Street



George Goens, second from left. Charles Craig, second from right.



MITCHELLVILLE, IOWA



From churches - village in stone - population

- air plane view, 1959